

Farm workers and climate change: Multiple threats and their socio-economic impacts

Federico Castillo, PhD

Department of Environmental Science, Policy and Management

Department of Ethnic Studies

April 20, 2023



Tackling the problem: Multidisciplinary teams



Funding and community partners



Department of Environmental Science, Policy & Management

One Climate Extreme-Site/Crop Specific Impacts

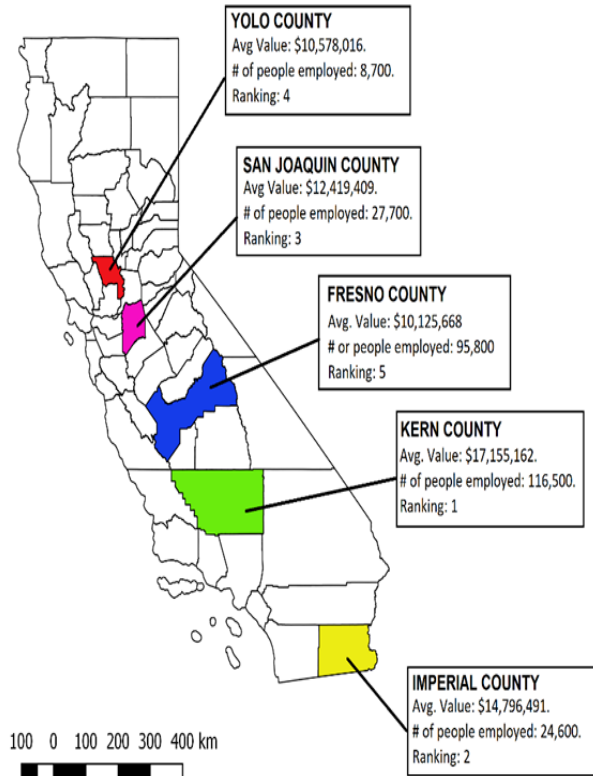
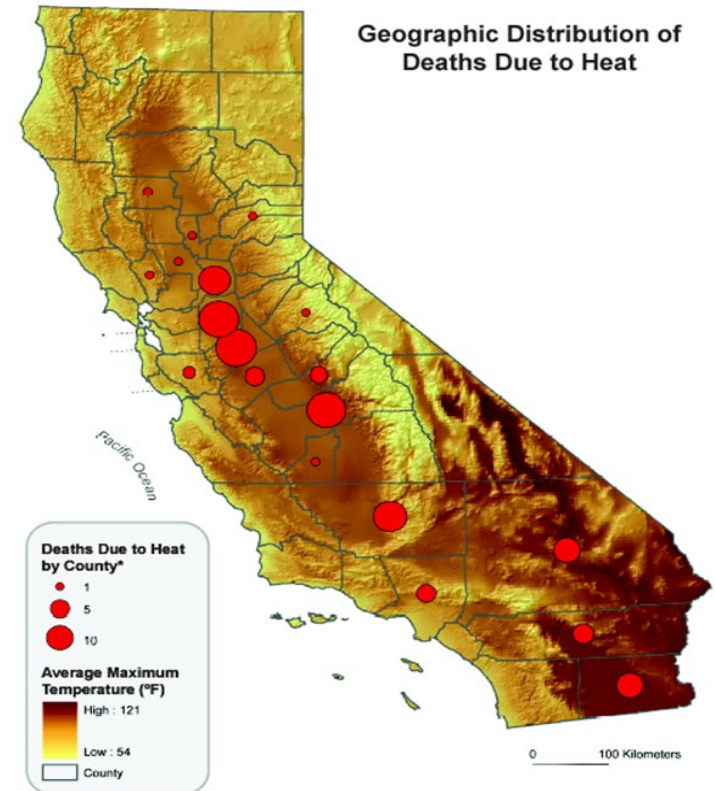
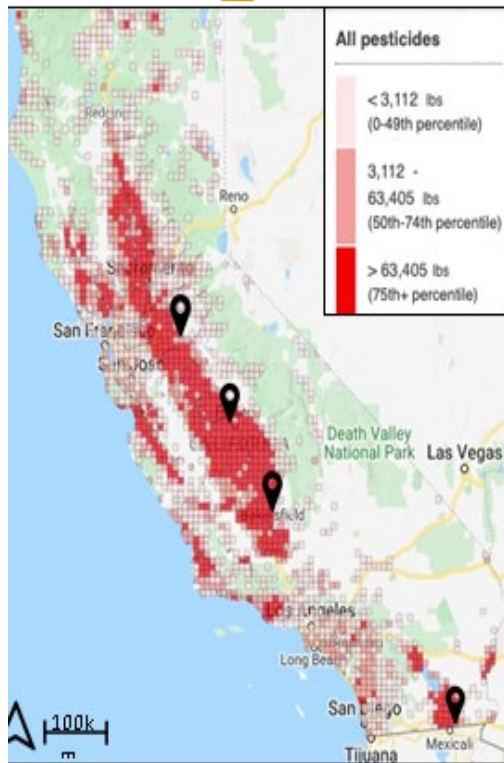


Figure 6:

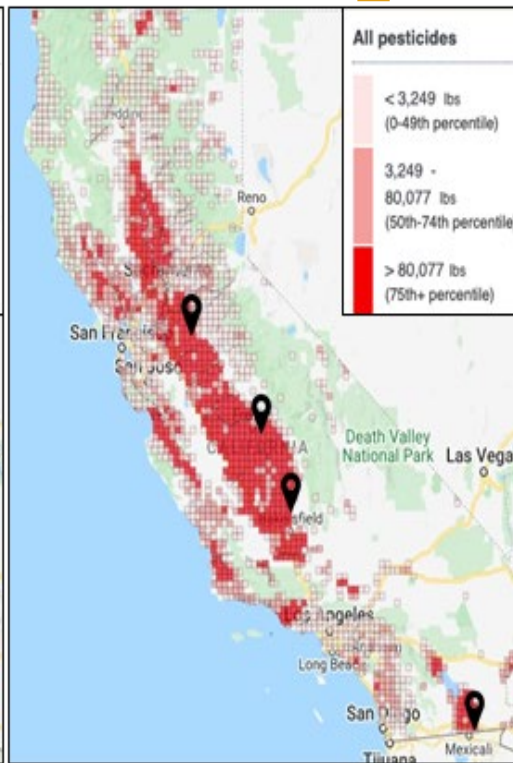


Climate Change Public Health Impacts Assessment and Response Collaborative
 California Department of Public Health and the Public Health Institute

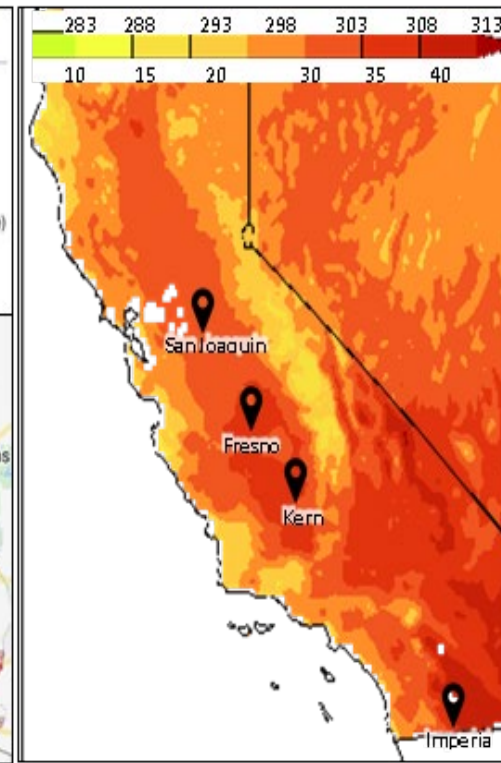
Pesticide use and Heat: Compounded impact



A: 1991 All Pesticides



B: 2017 All Pesticides



C: Average summer (JJA) maximum air temperature

Policy: Contradicting views

Farmworkers and their employers see wildfires as a threat and safety concern **but view solutions in different ways:**

- Growers and employers are concerned about air quality during a wildfire but had **no clear protocol and knowledge** as to what to do about it
- Farmworkers often do not use protective equipment—even when provided, due to the **discomfort caused by heat occurrence during wildfires**



Workers in Oakville, California.

December 2020

Source: Calmatters.org